



Who is part of the Alliance?

Partners:

- LXRA
- Lendlease
- Acciona Coleman
- WSP
- Metro Trains Melbourne (MTM)

Team location:

- Mentone (main office)
- Site locations

Project timing

Early 2018

- Station Street bridge starts
- Seaford Road starts
- Edithvale/Bonbeach EES on public exhibition

Late 2018

- Station Street bridge complete
- Seaford Road LX removed
- Land acquisition for Cheltenham complete
- Start works at Cheltenham & Mentone
- EES process is complete
- Early works for Carrum

2019

- Start major works at Carrum, Edithvale & Bonbeach
- Land acquisition at Kananook & Carrum complete



What work is included in the Alliance contract?

Construction start date: early 2018

Project cost: \$588m

Program includes:

- Level crossing removal at Seaford Road, Seaford
- \$10M Seaford Revitalisation
- New Station Street road bridge over the Patterson River
- Level crossing removals at Mascot Ave, Bonbeach, Station Street and Eel Race Road, Carrum
- New Carrum train station
- New train storage facility near Kananook Station

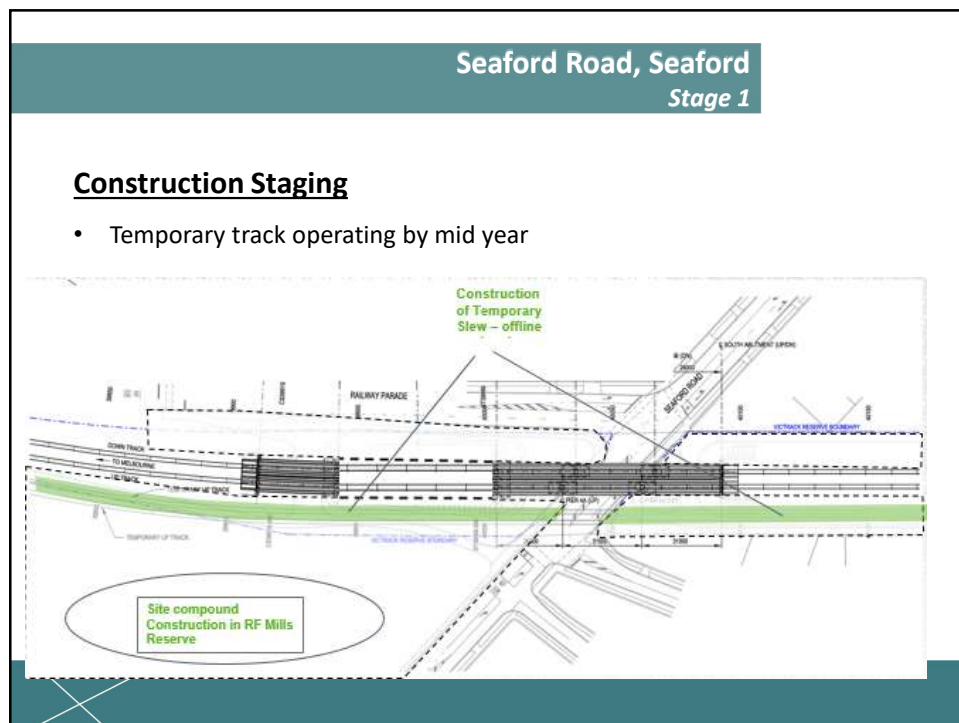
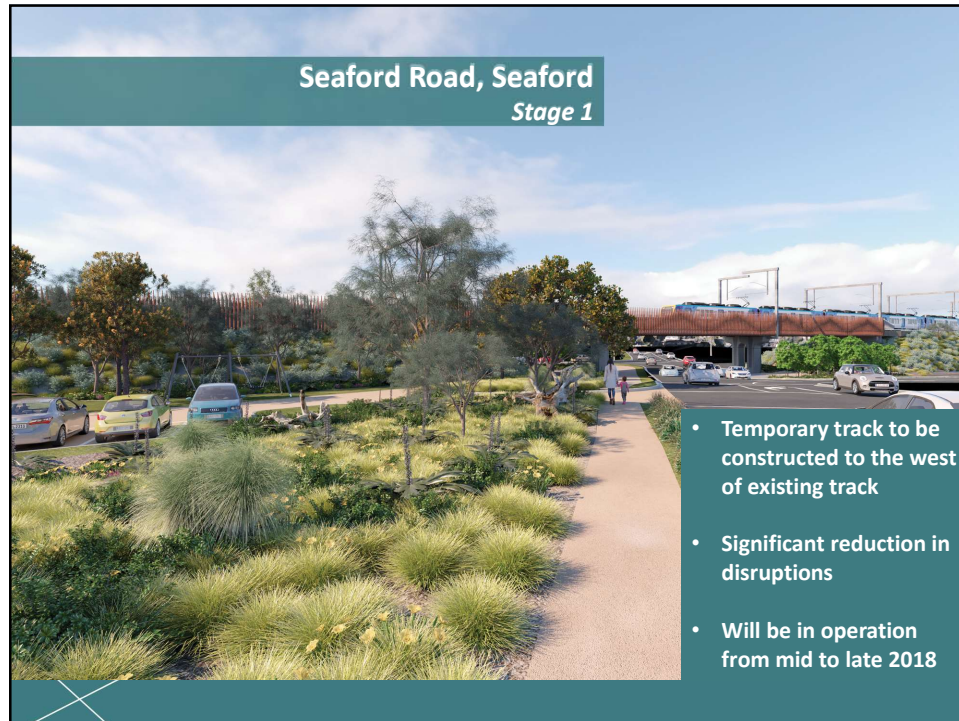
Revitalisation

- Revitalisation package of works for the Seaford Road project area based on community feedback
 - Safer connections
 - R.F. Miles Reserve



Key dates

- ✓ **Feb/Mar 2018**
 - Site preparation works
- **April/May 2018**
 - Temporary rail line built
- **Late May 2018**
 - Construction works start to remove the level crossing
- **Late 2018**
 - Level crossing removed
- **Mid 2019**
 - Construction of the Kananook Train Storage Facility starts
- **Late 2020**
 - Kananook Train Storage Facility complete

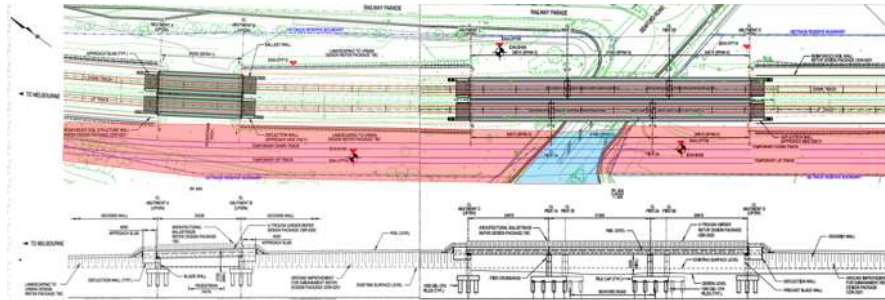


Seaford Road, Seaford

Stage 1

Construction Staging

- Embankments and structural works undertaken whilst trains are still running



What to expect

- Site offices
- Upcoming construction impacts
 - Pre-construction investigations
- Construction impacts
- Rail impacts

Communications

- **February**

- Letters to directly affected stakeholders
- Letter and face to face meetings: residences closest to the temporary track
- Signs around the local area
- Online engagement- social media, engagement hub
- Information sessions
- E-updates

- **March**

- Community update to 6,000 people in Seaford area
- Timely, regular and accurate information

Questions and Feedback

